



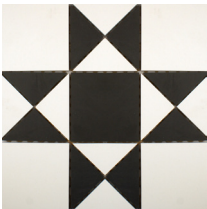
Victorian Floor Guide



The Gosford Range of Victorian style porcelain floor tiles offers a prestigious, timeless elegance that has come to be associated with period style floor designs. The range is created in classical geometric mosaic designs across four classic colours originally seen in churches and aristocratic homes of the 1800s.

This particular collection of Victorian style mosaic tiles is supplied complete on four different modular mesh mounted panels using our innovative manufacturing techniques. Individual pieces in our geometric mosaic designs are manufactured from the highest quality unglazed porcelain stoneware and then pre-assembled on mesh sheets to allow for easy installation and lower fitting costs. This system ensures pre-defined grout joints for perfect symmetry on floors giving a true representation of the high quality classic finish associated with the Victorian era. As a result the entire range is suitable for both indoor and outdoor use in a wide range of domestic and architectural applications.

Product Selection:



Black & White
285x285x8mm



Beige
285x285x8mm



Red
285x285x8mm



Yellow
285x285x8mm



Black & White Border
285x93x8mm



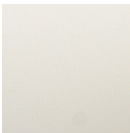
Black & White Corner
93x93x8mm



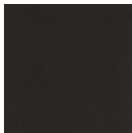
Red Border
285x93x8mm



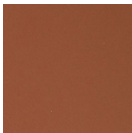
Red Corner
93x93x8mm



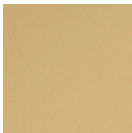
White Field
93x93x8mm



Black Field
93x93x8mm



Red Field
93x93x8mm



Beige Field
93x93x8mm



Yellow Field
93x93x8mm



Auburn Inset
93x93x8mm



Ashby Inset
93x93x8mm



Ascot Inset
93x93x8mm



Albert Inset
93x93x8mm



Technical Information:

Features

Victorian Style Natural Finish

Mesh Mounted Tile Panels

21 individual mosaic pieces per panel

Modular Design with Linking Components

Full Body Porcelain Tiles

Rectified Edges

Slip Resistance

Benefits

- Authentic Victorian Style Aesthetic

- Pre-determined Grout Lines (2mm)

- Reduced Fitting Time

- Reduced Fitting Costs

- Easy to Measure, Plan, Price and Fit

- No Sealing Required

- Less than 0.05% water absorption

- Highly Durable

- Scratch Resistant

- Stain Resistant

- Easy to Clean and Maintain

- UV Resistant

- Suitable for commercial areas

- Suitable for indoor & outdoor application

- Clean Minimal Appearance

- Minimum R9 Slip-Start Value

- A – Rated

- Coefficient of Friction

- Dry 0.67

- Wet 0.54

Domestic Use:

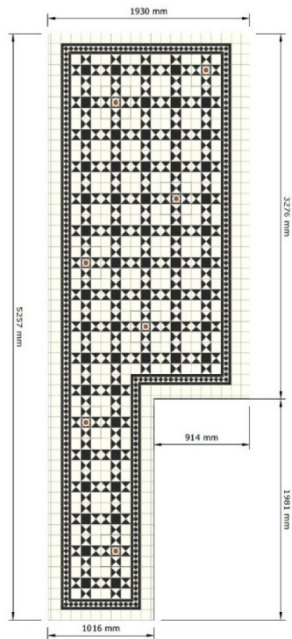
Bathrooms, kitchens, conservatories, porches, hallways, garden pathways and patios.

Architectural/Design Use:

Civic buildings, churches, hotels, museums, pubs, restaurants etc



Example 2D Drawing:

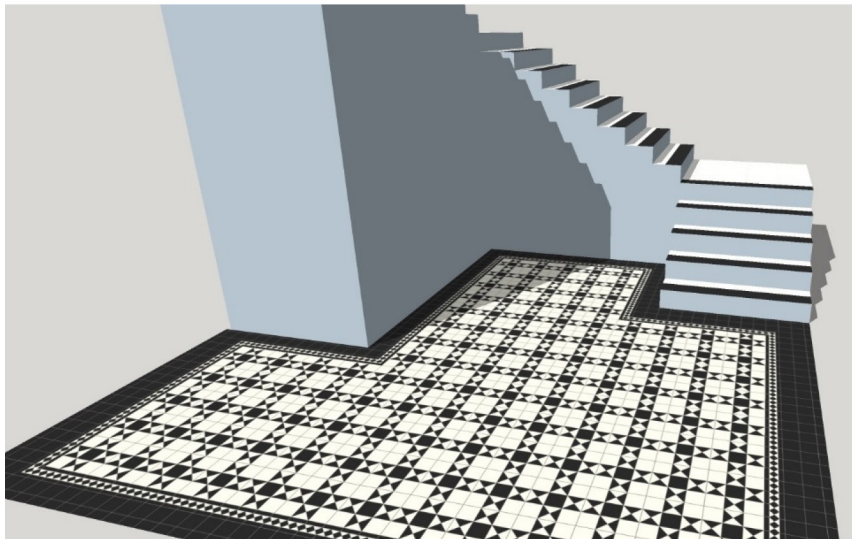


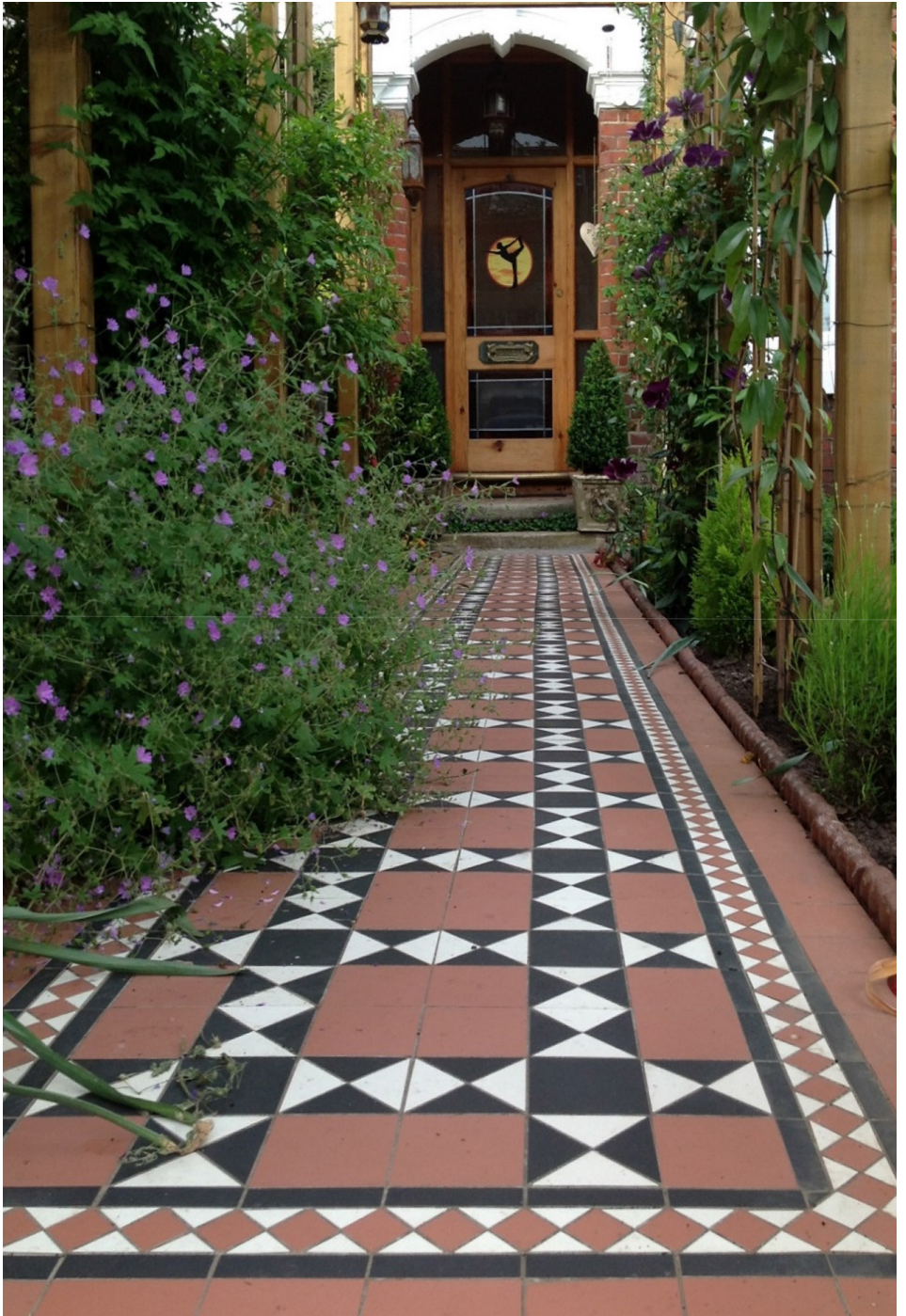
Items:

Quantity:

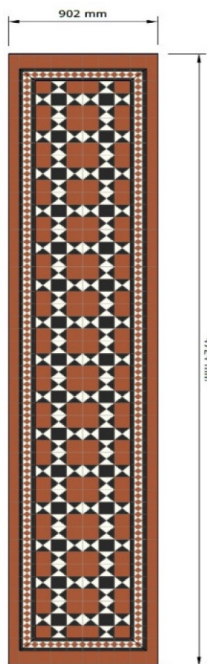
Black & White Panel	64
Black & White Border	44
Black & White Corner	6
Ashby Inset	7
Infill - White Field	252

Example 3D Drawing:





Example 2D Drawing:




Items:	Quantity:
Red Panel	30
Red Border	34
Red Corner	4
Inset	0
Infill - Red Field	114

Example 3D Drawing:





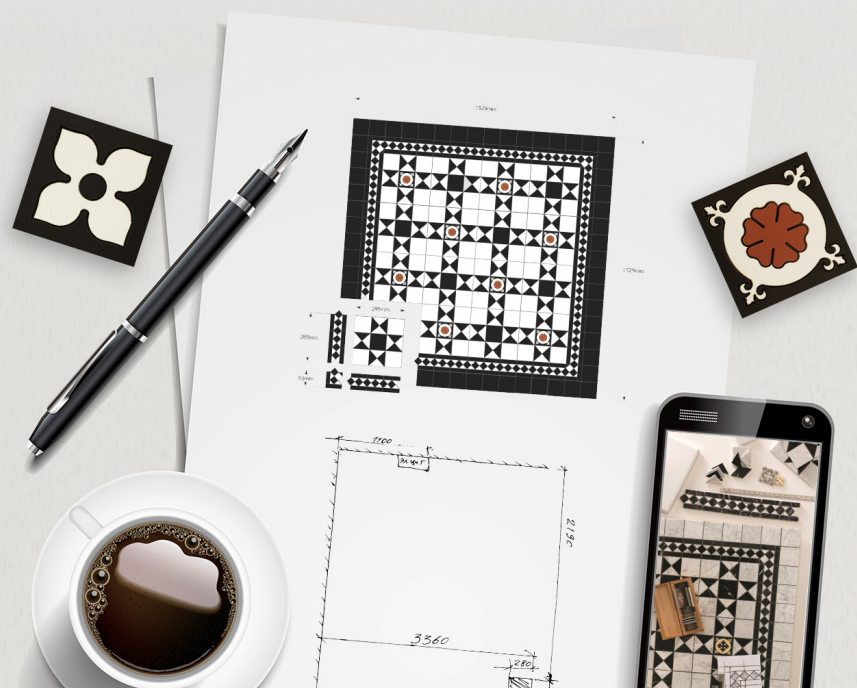


Bespoke Design Service Available:

For customers requiring bespoke geometric patterns and colour schemes we specialise in the design and creation of truly innovative tile and mosaic surfaces for interior, commercial and residential design projects.

We integrate several operational processes including the use of waterjet cutting and delicate hand assembly to consistently achieve high quality personalised floor tile designs, marble and tile carpets and bespoke mosaics for all applications that exceed the exact specifications of every client.

By using combinations of tiles, marble, glass and metal, our creative team will work with you create unique designs specifically tailored to your needs. From the initial brief, our creative in-house design team can provide you with a comprehensive design service including colour suggestions, prices, 2D and 3D drawings, samples and technical information.



Manufactured in the UK for:

Walls And Floors LTD
Garrard Way
Kettering
Northamptonshire
NN16 8TD

Opening times:

Mon - Fri: 8.30am - 7.00pm

Sat: 9.00am - 4.00pm



Sample Service

We recommend ordering tile samples
with FREE Delivery prior to purchasing to
see the true beauty of the product.



Price Beat Promise

If you find any comparable product
cheaper elsewhere we will beat the
competitor price by 5%!



Fast Delivery

Walls and Floors deliver to all UK
Mainland addresses FREE if the order is
over £99!



Call us...

If you have any questions or queries, please
don't hesitate to contact our friendly and
knowledgeable staff on 01536 314730.



www.wallsandfloors.co.uk