

# TREPANEL™

ACOUSTIC WOOD PANEL SOLUTIONS



by [wallsandfloors.co.uk](https://wallsandfloors.co.uk)

## INSTALLATION GUIDE

### You will need:

Allen Keys (provided)  
Anchor Pieces (provided)  
Shelf  
Thumbscrews  
Spirit Level



### SIZES



140x359x90mm  
max weight on shelf 5kg\*

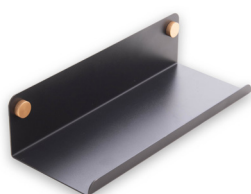


140x519x90mm  
max weight on shelf 15kg\*



140x759x90mm  
max weight on shelf 25kg\*

### STYLES



#### 1 - Placement

First, decide where you want to place your Trepanel Customise® shelf. Don't worry too much about picking the perfect spot the first time, as they can be easily removed and installed somewhere else if you change your mind!

When you have chosen where you want your shelf to go, you will need your Allen key and silver anchor pieces.

#### 2 - Installing the Anchor Pieces

To install the silver anchor pieces, simply place them in between the slats, where you want your shelf to go, and twist it in with the Allen key, so that the two longer pieces sit behind the MDF Slats, and the pin is securely inserted into the felt backing.

Use a spirit level to ensure your second or third anchor pieces are straight.

#### 3 - Fitting the Shelf

Place your shelf against your Trepanel® wood panel wall, aligning the holes in the top of the shelf with the silver anchor pieces you previously installed. Take your thumbscrew and simply screw it through the holes in the shelves and into the silver anchor piece. Repeat on the other side.

To place an order online visit [wallsandfloors.co.uk](https://wallsandfloors.co.uk)  
alternatively, call our customer service team on: 01536 314730