



# TREPANEL

WATERPROOF PANEL SOLUTIONS



**TREPANEL**

WATERPROOF PANEL SOLUTIONS



Are you ready to transform your home with the sleek, modern style of Trepanel Aqua® Wood Effect Panels?

Perfect for bathrooms, kitchens, and any space prone to moisture or splashes, these panels offer the ultimate blend of contemporary style and functionality.

We're here to walk you through everything you need to know to successfully install Trepanel Aqua®, ensuring a chic and durable finish.

# Installing Trepanel Aqua® Using Adhesive

## *You will need:*

- Trepanel Aqua® Panels
- Mapei Super Grip Panel Adhesive
- Tape measure
- Fine tooth saw
- Tanking system\*
- Silicone Sealant

## Step 1 - Prepare your Wall

Before beginning any installation process, ensure your surface is clean and dry from dust and debris. For best results, you may also need to fill in any cracks or imperfections in the wall.

If using in an area that is coming into direct contact with water, you will need to tank it with a tanking system. Tanking provides a protective barrier that prevents water from penetrating through the slats and reaching the surface underneath.

If this is not done correctly, moisture may seep into the walls and cause damage, so please ensure you read the manufacturer's instructions closely.

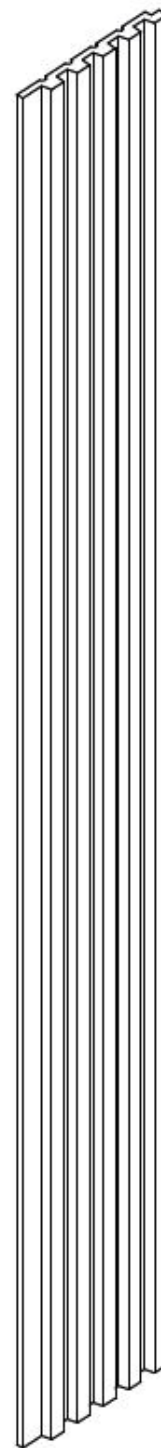
\*Please Note: *Tanking systems are only required when using Trepanel Aqua® in areas with direct contact with water.*

## 2 - Tanking Your Bathroom Wall

You can use either a tanking system or a waterproof membrane that is specifically designed for use in wet areas.

Some common choices for this include both sheet membranes, liquid-applied membranes or waterproof boards.

We recommend our [Mapei Aquadefence Tanking Kit](#).



### 3 - Apply the Membrane

Following the manufacturer's guide, apply your tanking system kit to the surface. This is typically done with a brush, roller or trowel. Focus on corners, joints, seams and any other tricky-to-reach areas.

To avoid leaks, seal around pipes, fixtures, and any other penetrations in the surface using a compatible waterproof silicone sealant. If you're using a sheet membrane to waterproof the space, ensure you overlap the joints to create a continuous barrier.

As per the recommended time from the manufacturer's guide, allow your membrane to dry completely then conduct a water test to ensure there are no leaks **before** you get started on applying your Trepanel Aqua® Slat Panels.

### 4 - Cutting our Waterproof Wood Effect Slat Panels

Before attaching any panels to your wall, you may find you need to cut the panels to fit into your space or around obstacles. (Consider light switches or potential plugs)

We advise using a fine-tooth handsaw for cutting the panels to size or for obstacles. Measure the piece you need to apply to the wall and cut away any excess material.

### 5 - Attach your Waterproof Slat Panels

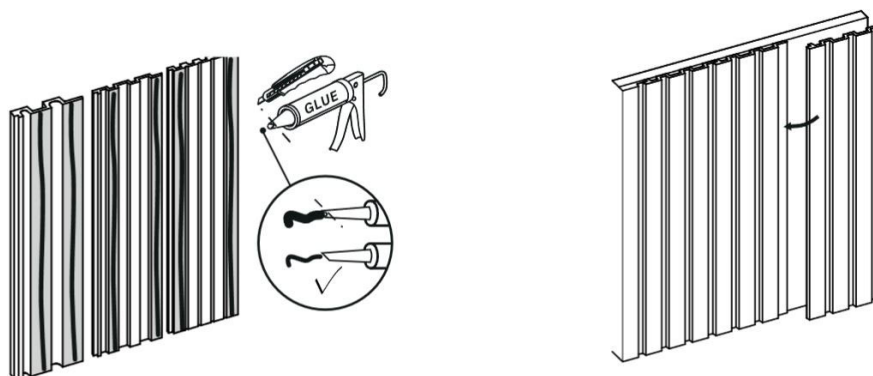
Once your tanking and cutting are complete, our Trepanel Slat panels can be fixed directly onto the surface. For a quick and easy way of doing this, use our [Mapei Super Grip Panel Adhesive](#).

Apply adhesive to the full length of the panel on each raised ridge on the back of the panel, working left to right place the first panel with the tongue to the right. Press firmly to adhere the panel.

Take the next panel repeat the glue on all raised ridges of the back of the panel, and also on the underside groove. Press firmly into place, securing the panel and creating a waterproof barrier. Clean away any excess.

For further waterproofing, apply a clear silicone seal to the joint if the area will be exposed to water. Wipe away any excess.

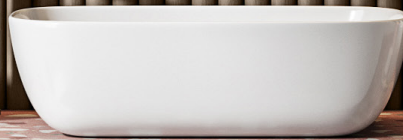
Please note: If mounting shelves, mirrors or other bathroom accessories they need to be anchored to the wall (and not the panel) with the appropriate fixings.



Seal around any holes you may have created during installation with silicone sealant, ensuring you maintain waterproof integrity.

For a secure and finished look around the edges of your Trepanel Aqua panels, We recommend the [Mapesil 120 Black Silicone Sealant](#).

TREPANEL  
WATERPROOF PANEL SOLUTIONS



# Installing Trepanel Aqua® Using Screws

## *You will need:*

- Trepanel Aqua® Panels
- Black Screws
- Electric Drill
- Tape measure
- Fine tooth saw
- Tanking system\*
- Silicone Sealant

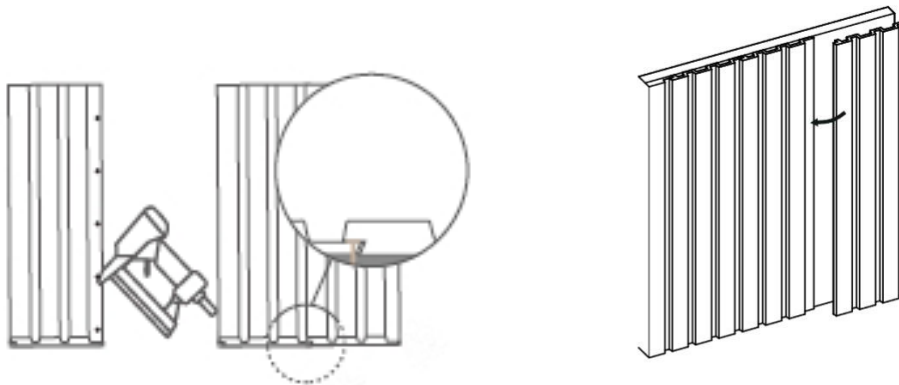
## Step 1 Prepare your Wall

*To prepare your surface,  
please follow steps 1-4.*

## 2 - Attach your Waterproof Slat Panels

Once your tanking and cutting are complete, our Trepanel Slat Panels can be fixed directly onto the surface.

To ensure a secure fit, use black screws. Hold your panels against the wall, and use your electric drill to drive the screws through the black section of the slats and into the wall behind them. Space these out evenly for a secure fit.



Seal around any holes you may have created during installation with silicone sealant, ensuring you maintain waterproof integrity.

For a secure and finished look around the edges of your Trepanel Aqua panels, We recommend the [Mapesil 120 Black Silicone Sealant](#).

To place an order online visit: [wallsandfloors.co.uk/wall-panels/trepanel-aqua](https://wallsandfloors.co.uk/wall-panels/trepanel-aqua)  
alternatively, call our customer service team on: 01536 314730



## The Correct Way to Install Fixtures with 3D Panels

Installing a shower fixture with 3D wall panels. To ensure a tight waterproof seal remains in tact you will need to create a flat surface for the fixture to mount to. This can be done in a few ways:

**Use a Flat Panel Insert:** Cut a square or circle of flat, waterproof panel material and mount it flush with the surrounding 3D panels. The shower fixture can then be securely installed on this flat surface.

**Create a Recessed Inset:** Cut a larger opening in the 3D panel and the drywall behind it. Then, build up a small, flat surface using a waterproof backer board (like cement board) that is exactly flush with the front of the 3D panel. This allows the fixture to be mounted securely and sealed correctly.

**TREPANEL**

WATERPROOF PANEL SOLUTIONS



### How do I Clean and Maintain my Trepanel Aqua® Panels?

Maintaining the beauty and longevity of your Waterproof Wood Effect Panels is straightforward with the right care. To preserve the vibrant and detailed wood effect design, we advise avoiding installation in areas where direct sunlight may hit them, as UV rays may cause the colouring to change over time. Additionally, it's crucial to install these panels away from heat sources such as hobs or fireplaces, as temperatures exceeding 50 degrees can damage the material. To clean your Trepanel Aqua® we simply recommend a damp cloth. We recommend avoiding the use of harsh, abrasive or alcohol based products as these can degrade or scratch the panels surface. Splashes of such materials should be removed as soon as possible to avoid damage to the surface.

# FAQ's

Q. Can I install these panels directly in a shower?

A. *Yes, if installed as recommended with a correctly tanked wall*

Q. Can I install in a conservatory?

A. *We do not recommend for conservatories as the colour may fade in direct sunlight.*

Q. Can I use these panels outside?

A. *Our Aqua panels are not suitable for external use*

Q. Can I safely use these panels as a splashback behind my hob?

A. *We don't recommend fitting Trepanel Aqua® in close proximity to a heat source exceeding 50c, so we would not recommend fixing near a hob.*

Q. Can these panels be safely installed behind a radiator or heated towel rail?

A. *Yes they are suitable for temperatures up to 50 degrees*

Q. Can I fit them both vertically and horizontally?

A. *Yes – Trepanel Aqua® can be fitted both vertically and horizontally using the T&G interlocking system. Panels are 240cm long, be aware when fitting horizontally to walls exceeding this width that you will have to butt panels up and will have a join.*

Q. Can I fit these panels to the ceiling?

A. *Yes – we recommend screwing the panels into the ceiling in addition to using Grab adhesive please ensure when placing screws that they are clear of any pipework or cables.*

Q. Can I mount shelving, mirrors or bathroom accessories directly onto the panels?

A. *Any item will need to be anchored through to the wall below using appropriate fixings*

Q. How can I give the joints a waterproof barrier?

A. *Apply adhesive on the underside groove. Press firmly into place. Clean away any excess. For further waterproofing, we recommend applying a clear silicone seal to the joint if the area will be exposed to water. Wipe away any excess.*

Q. Are the panels totally waterproof?

A. *Panels are – but unless tanked as suggested, the joints will not be*

Q. Do the panels warp or discolour over time?

A. *The panels may fade in direct sunlight.*



### What Makes Trepanel Aqua® 3D Panels the Best Choice?

Trepanel Aqua® 3D Panels stand out as a superior choice for both DIY enthusiasts and professionals alike, thanks to their interlocking format. This unique design feature ensures a quick and effortless installation process and a seamless, elegant finish without the need for additional surface treatments. The panels are pre-printed with high-resolution, durable designs, eliminating the need for post-installation finishing. Our panels are constructed from rigid, recycled polystyrene, making them environmentally friendly and remarkably sturdy. The single-component format means that even when you cut your panels to fit into your space, the slats remain securely attached to the backing, maintaining their integrity and aesthetic appeal.

*For more inspiration and advice on how to style wood slat wall panels, we recommend checking out our blog, which is packed with all the latest trends! Tag us in pictures of Trepanel Aqua® in your home over on Instagram, @Wallsandfloors, we love seeing your designs!*