



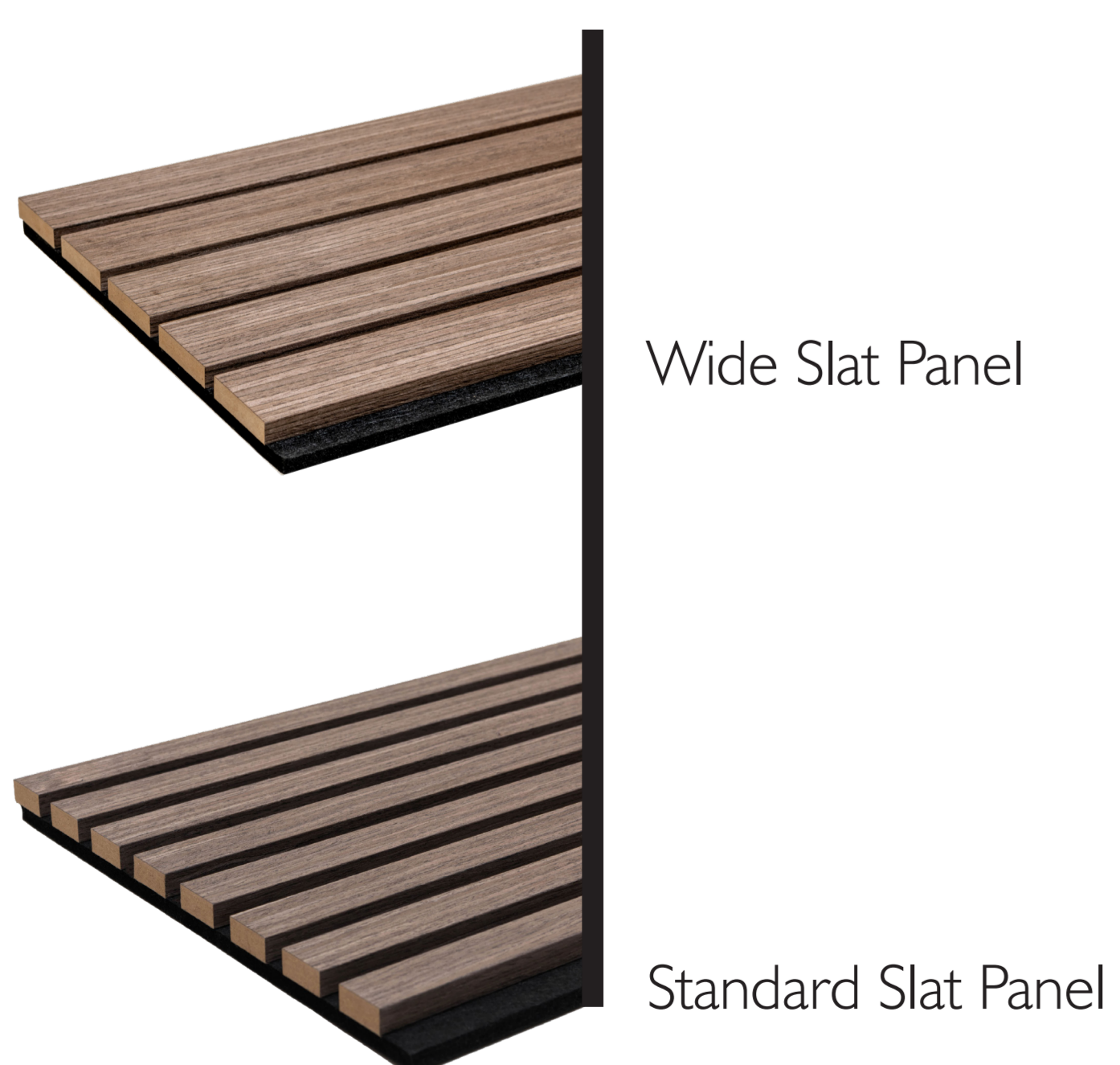
## Overview

### SIZES

1200x600mm

2400x600mm

### STYLES



Transform your space with Trepanel<sup>®</sup>, the ultimate choice for achieving the trendy wood slat style in your own home. Our panels are backed with a strong felt material that not only adds durability but also boasts excellent sound-absorbing qualities, making it perfect for larger areas with hard floors. Constructed with a lightweight MDF core, Trepanel<sup>®</sup> can be installed by one person, saving you time and effort. Within minutes, your space will be completely transformed!

The fully veneered slats are crafted from natural wood material, ensuring that no two slats are alike. You can expect the natural characteristics of texture, colour variation, and grain that only real wood can provide. Plus, these features are visible from all angles, adding a touch of authenticity to your space.

To cater to your design preferences, we offer a variety of styles, including wide slats, mini panels, and coloured options. Choose the style that best suits your aesthetic and create a truly unique and stunning space with Trepanel<sup>®</sup>.

### BENEFITS

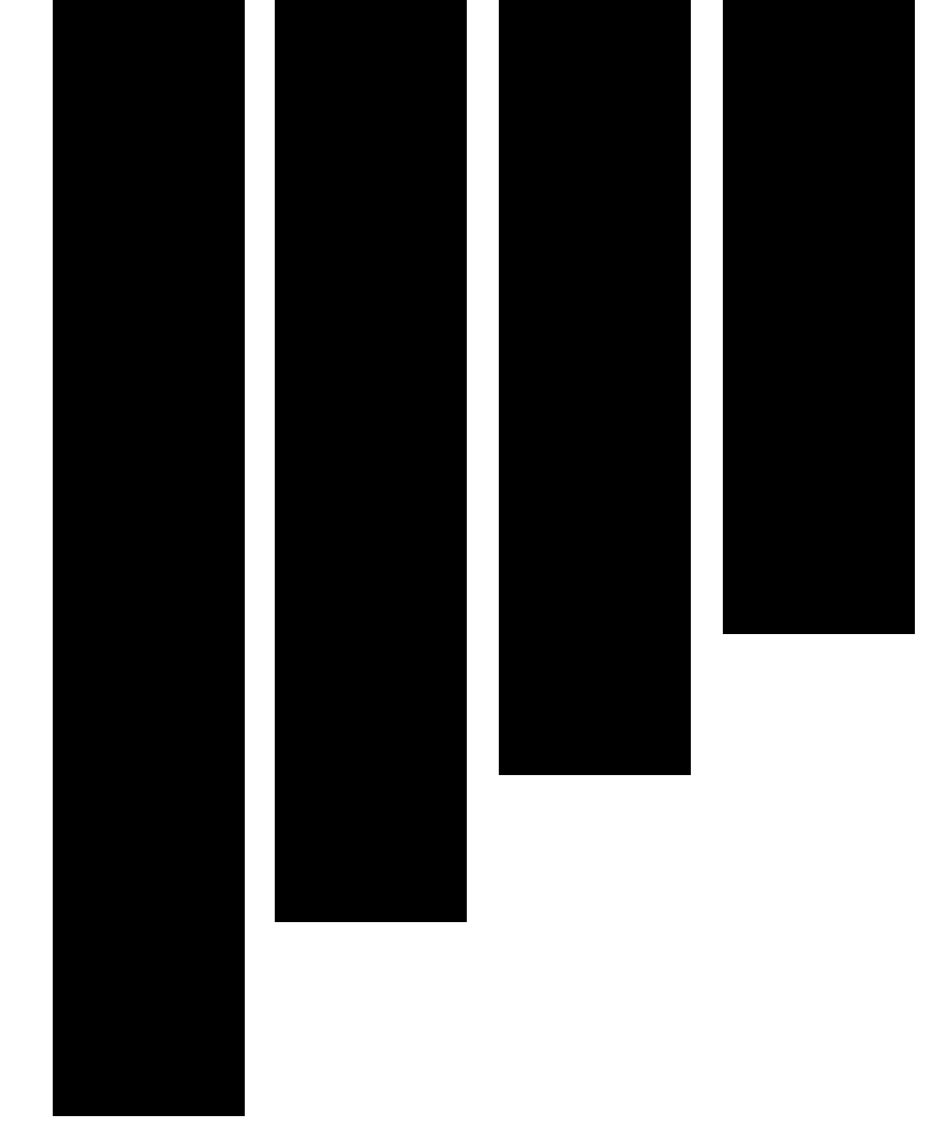
- Suitable for walls and ceilings.
- A quick and simple way to transform your interior space.
- Strong felt backing with sound absorbing properties.
- Free delivery on orders over £299 from our UK warehouse.

To place an order online visit: [wallsandfloors.co.uk](https://wallsandfloors.co.uk)  
alternatively, call our customer service team on: 01536 314730

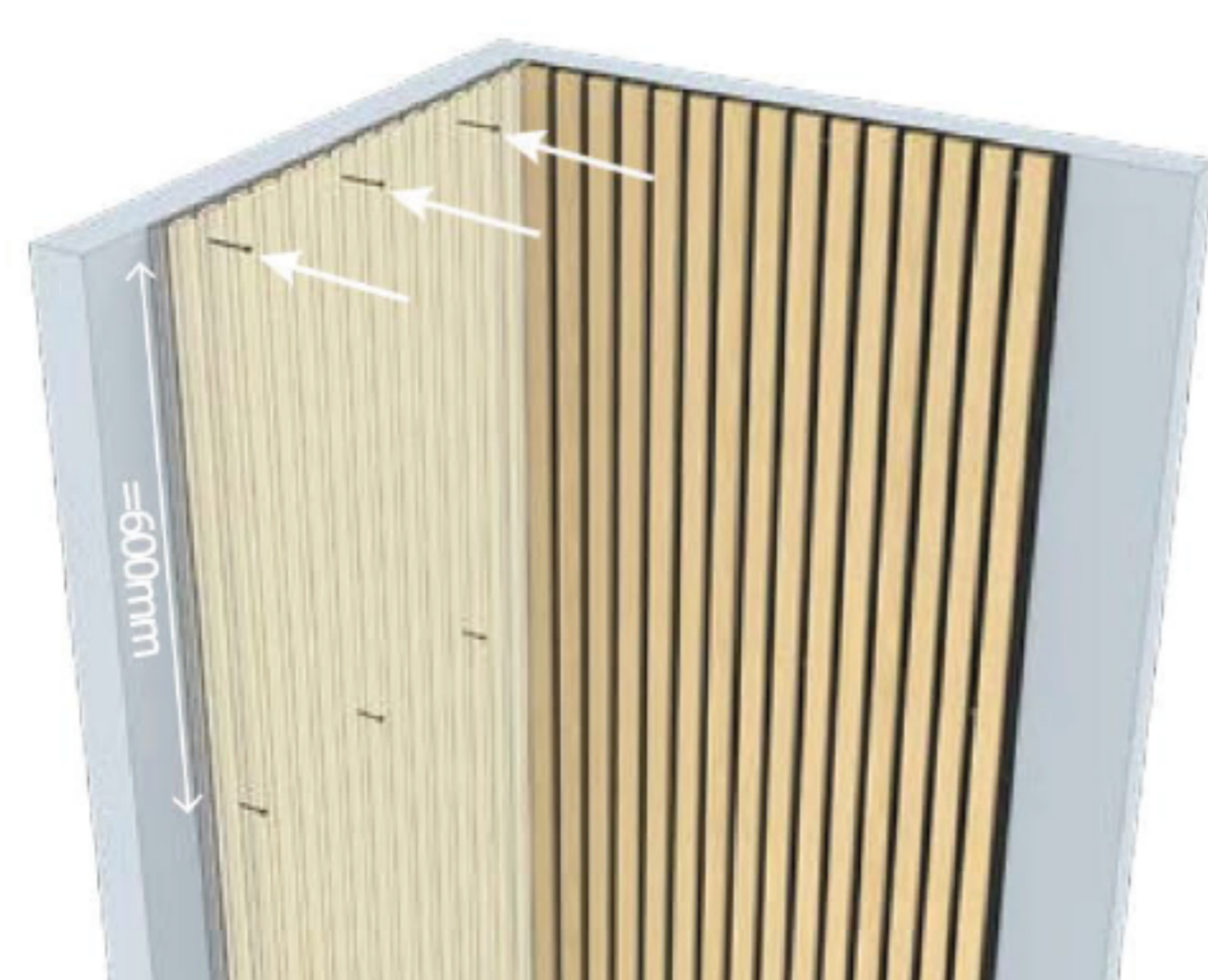
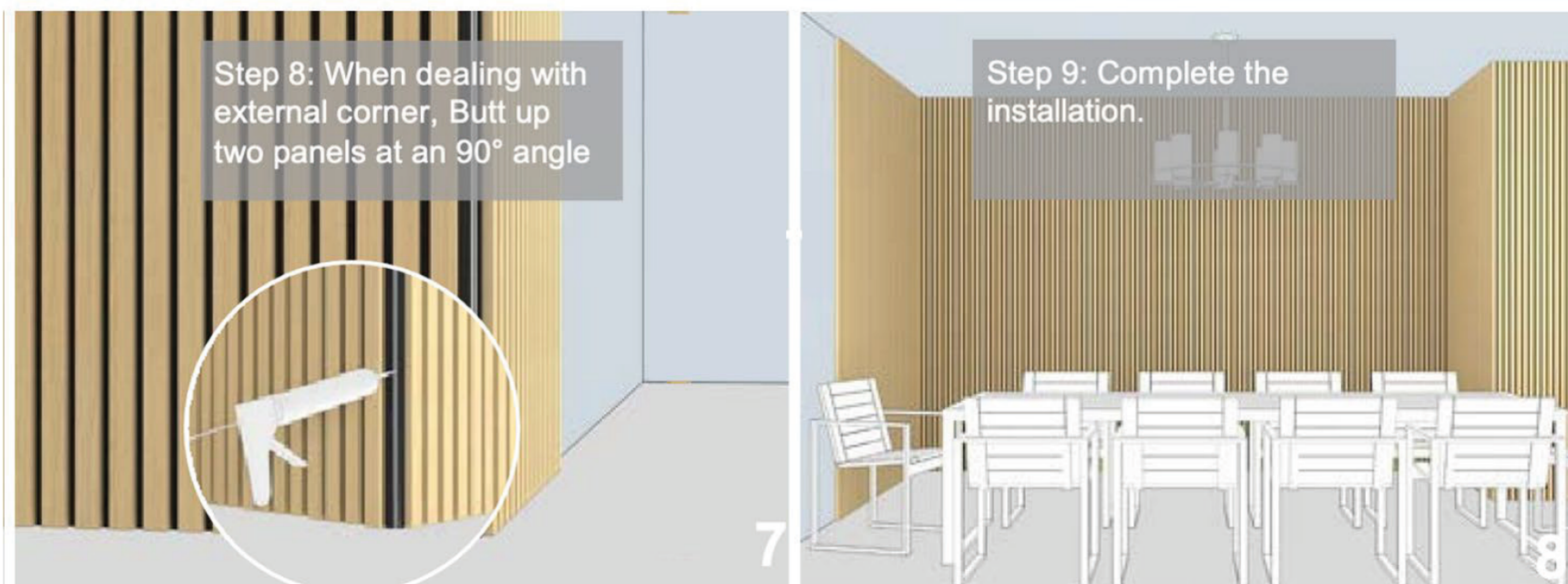
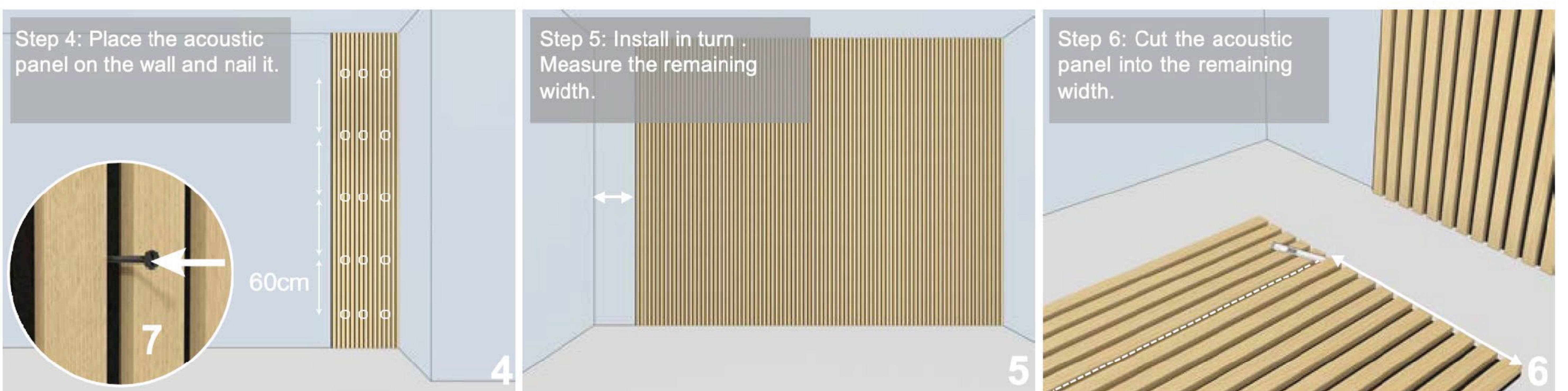
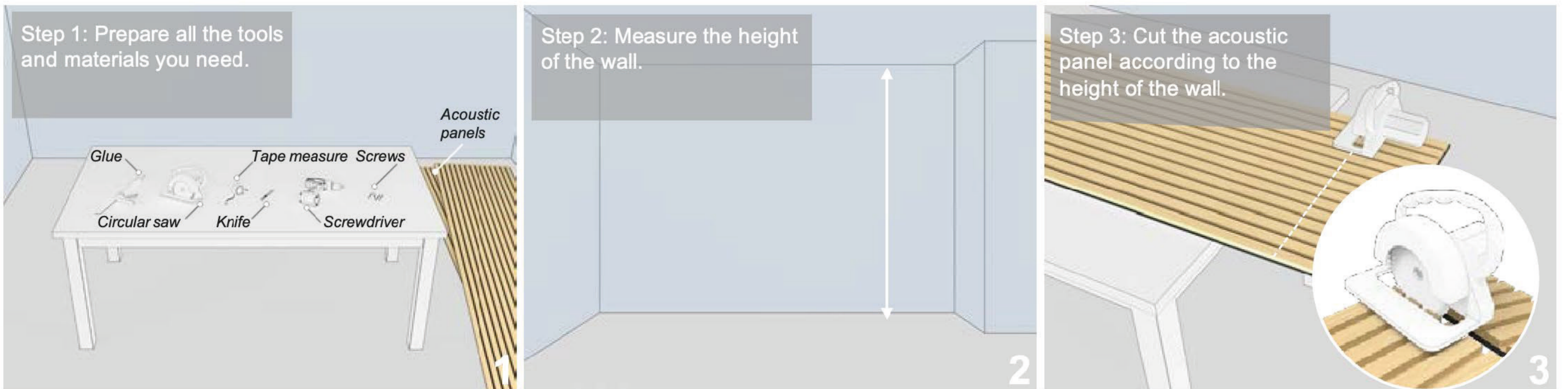


# TREPANEL<sup>®</sup>

ACOUSTIC WOOD PANEL SOLUTIONS



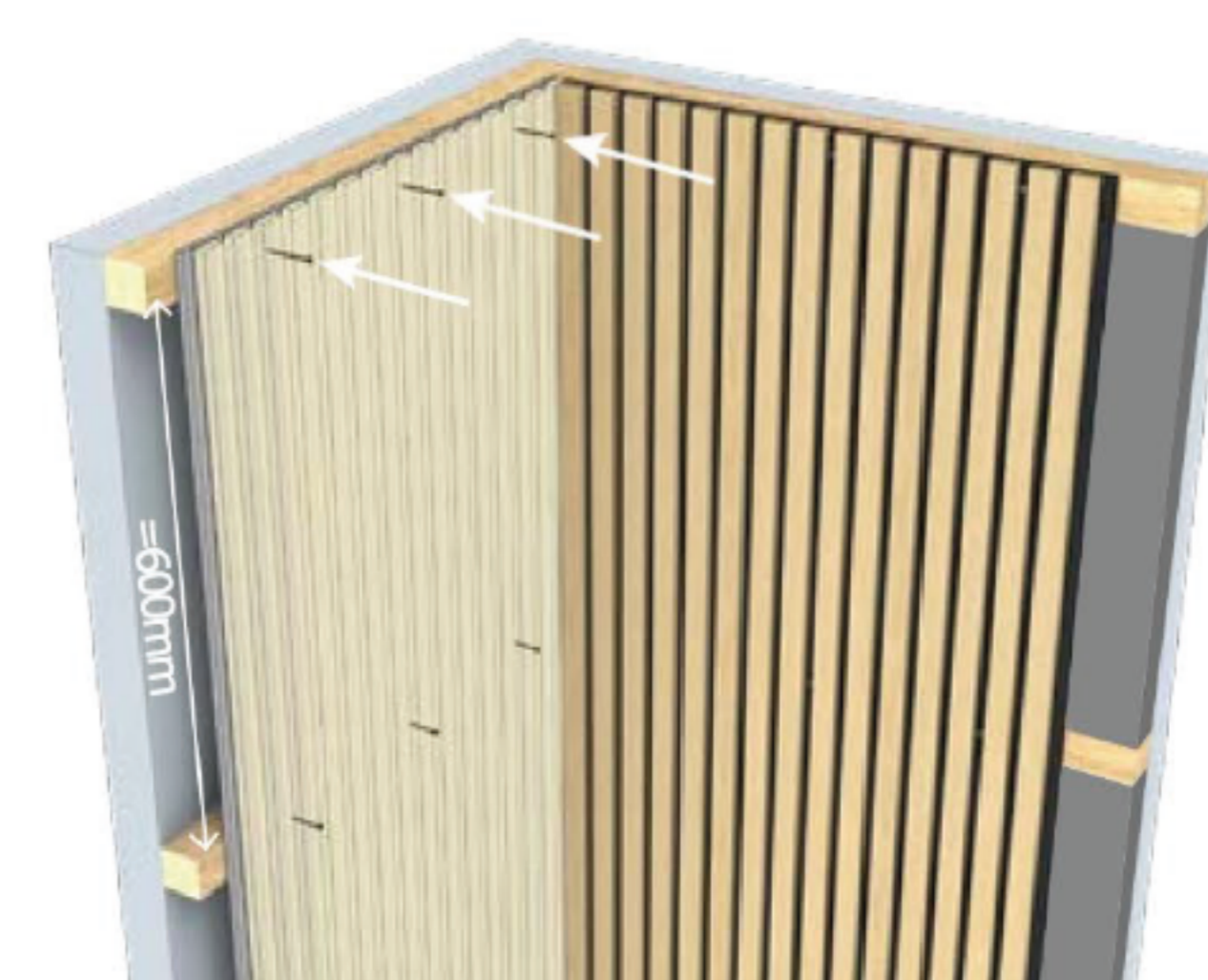
## INSTALLATION GUIDE



**a.** Nail acoustic panels directly to the wall.  
absorption class: D



**b.** Attach acoustic panels to the wall with nail-free glue.  
absorption class: D



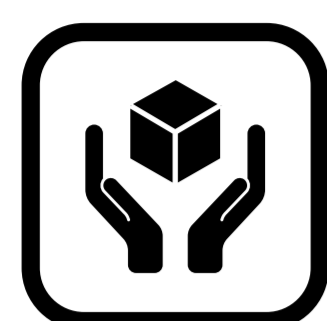
**c.** Install fibreglass wool or rock wool between the battens.  
absorption class: A



Scan QR Code for more info

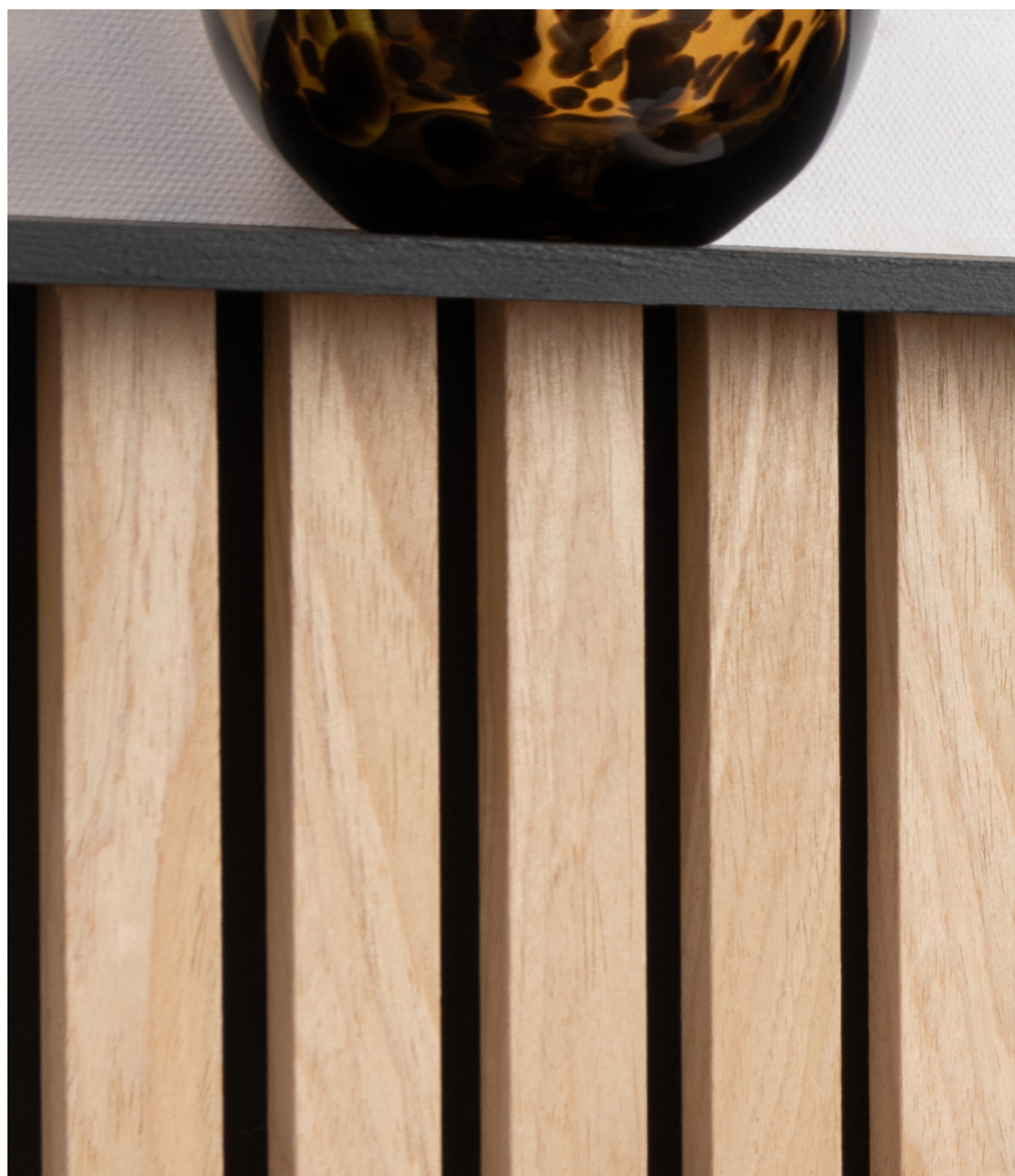


# Product Care



## After Care

Periodic dusting with a duster or soft-bristled brush is suggested to maintain the condition of Trepanel<sup>®</sup> wall panels; **abrasive materials and wood/furniture polish should not be used.**

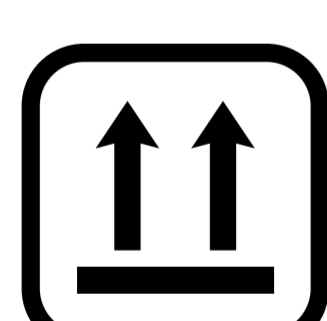


## Maintenance

Trepanel<sup>®</sup> slats do not require oiling as they are fully finished and this may also damage the veneer. Periodic use of vacuums with a soft attachment can also easily and efficiently remove dust from the felt back of your wall panels.

For more stubborn scuffs and marks, we advise using a damp (**not wet**) cloth or sponge to gently wipe away and remove.

**Avoid excessive moisture** with Trepanel<sup>®</sup> as the felt backing should not come into contact with liquids. If spills do occur, use a clean, absorbent cloth to dry immediately.



## Handling & Storage

When handling your wall panels, ensure you avoid contact with sharp or scratchy objects to prevent scuffs or marks.

Our packaging has been carefully selected to protect the corners of our panels with extra reinforcement on the edges, each panel also has a cover across for extra protection.

When storing your panels prior to installation they need to be stored inside in the room they will be fixed to allow them to acclimatise, lay flat, **DO NOT STORE VERTICALLY.**



To place an order online visit: [wallsandfloors.co.uk](https://wallsandfloors.co.uk)  
alternatively, call our customer service team on: 01 536 314730

**PRODUCT CARE**



# Frequently Asked Questions

1

**How do you secure them to the wall?**

The panels are so easy to install. You can either use a board-fix adhesive or screw to the wall through the felt backing using black screws. Please see our installation guide for further information.

2

**Can the panels be cut, and how?**

Yes, the panels can be cut to your desired size. To cut through the wood veneer, you can use a small hand saw and for the felt, we recommend using a sharp stanley knife.

3

**Can I use around plug sockets, switches, windows, etc?**

Yes, the panels can be cut to be around plug sockets and they are a great way to hide any loose wires. The shape will need to be carefully measured and then cut the same with using a hand saw and a stanley knife.

4

**What if my wall is higher than 2.4m?**

We have panels 2.4m metres high and also in 1.2m so you can use a mixture of both if required, alternatively, the panel can be cut.

5

**Can these be installed on the ceiling?**

Yes. It can be installed onto the ceiling, provided you install wooden battens beforehand.

6

**Can I attach fixtures and fittings?**

Yes, you can install anything such as mirrors, TV brackets, lights and shelves. All you need to do is drill through the felt into the wall and use the correct fixings such as wall plugs, screws or nails.

7

**How do I cover an exposed edge?**

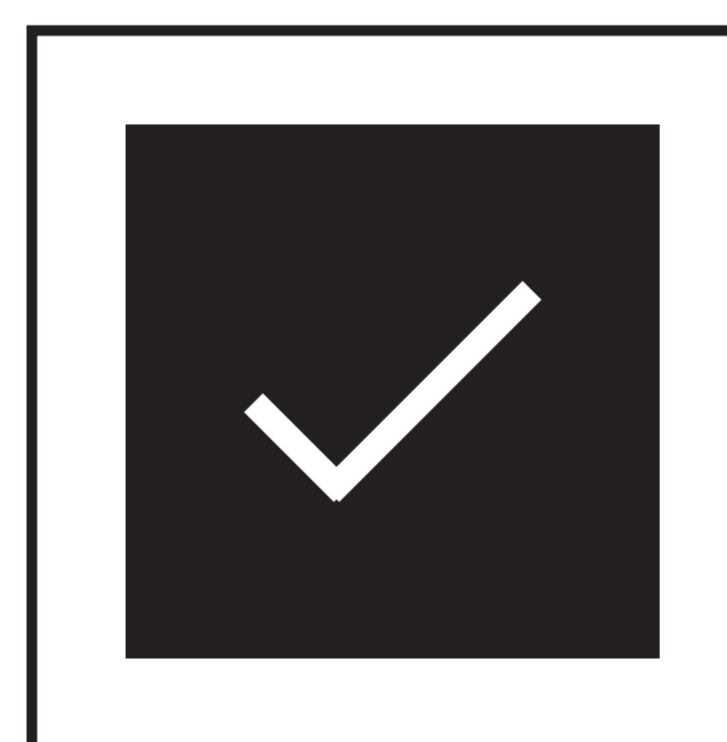
Our wood veneer is coated on all three sides so there's no need for a finishing strip on exposed edges.

8

**Where can these be installed?**

Our wood panels are only suitable for interior use, almost anywhere in the home. However, we do not recommend they are fitted anywhere near a heat source such as a hob or where they will be in contact with water, like the kitchen and bathroom.

## Warranty



**2 YEAR  
WARRANTY**

\*Covering material & manufacturing defects only

Our acoustic panels have a 2 year warranty covering material and manufacturing defects only. Before installing check you are happy with each panel.

The wood veneer is a natural material, and each piece of veneer is unique in terms of wood's natural characteristics, that being texture, colour variation and grain, it also may undergo changes over time when exposed to light.

- The manufacturing defect warranty only applies to unassembled products.
- The warranty does not apply if the malfunction is caused by improper handling and assembly.
- The warranty does not cover damage caused by improper product storage.
- The warranty only applies to products used indoors.
- Scratches, normal wear and tear or impact marks are not covered by warranty.
- The warranty does not apply if the panels are used improperly or inappropriately.